



Apartment

# Church Crescent London N10 3NE

## £392

Council Tax Band: D

### FEATURES

- One Bedroom
- Reception Room
- Separate Fitted Kitchen
- Bathroom
- Top Floor
- Permit Parking



**ADN**  
RESIDENTIAL

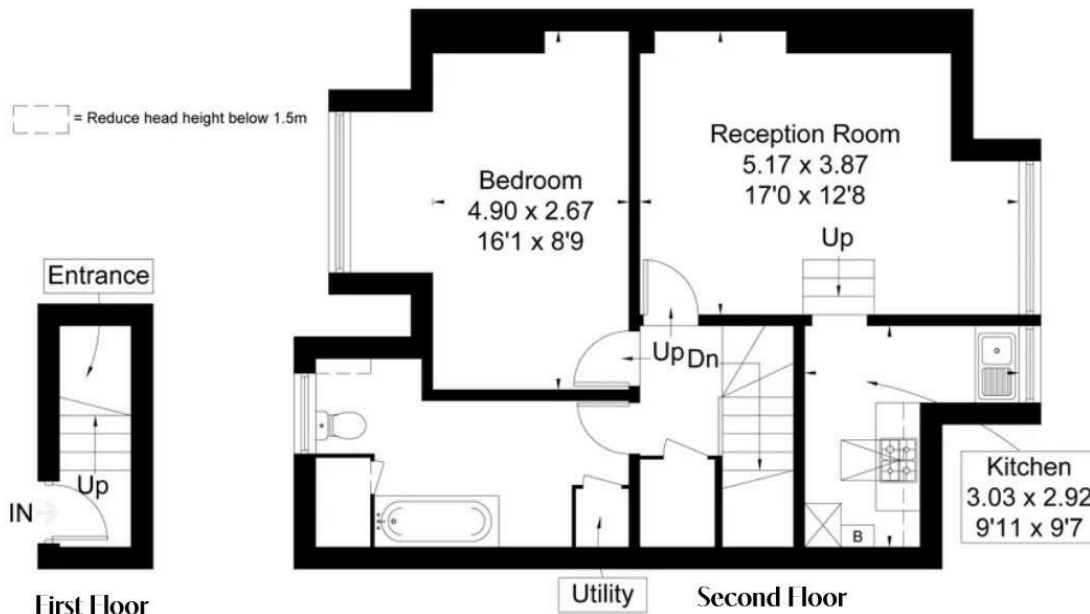




# 1 Bedroom Apartment located in London

A bright and spacious one double bedroom apartment arranged over the second floor of a handsome period property located in Muswell Hill. This well presented apartment offers over 650 sq ft of well planned accommodation and comprises, spacious reception, separate fitted kitchen, generous principal bedroom and a family bathroom. Church Crescent is ideally positioned 0.6m from Highgate underground station (Northern Line) and the local amenities that the Village has to offer

Church Crescent, Muswell Hill, N10



APPROX INTERNAL AREA 60.5 SQ M - 651 SQ FT

Energy Efficiency Rating		Current	Potential
Very energy efficient - lower running costs			
(92 plus) A			
(81-91) B			
(69-80) C			74
(55-68) D		51	
(39-54) E			
(21-38) F			
(1-20) G			
Not energy efficient - higher running costs			
England & Wales		EU Directive 2002/91/EC	

Call us on

**020 7407 5155**

[info@adnresidential.co.uk](mailto:info@adnresidential.co.uk)

[www.adnresidential.co.uk](http://www.adnresidential.co.uk)

Agents Note: Whilst every care has been taken to prepare these particulars, they are for guidance purposes only. All measurements are approximate and are for general guidance purposes only and whilst every care has been taken to ensure their accuracy, they should not be relied upon and potential buyers are advised to recheck the measurements.

**ADN**  
RESIDENTIAL